





CONSTRUCTION & FIT-OUT

The background features a complex geometric pattern of overlapping triangles in various shades of yellow and white, creating a sense of depth and movement. The triangles are arranged in a way that they appear to be floating or layered, with some pointing towards the viewer and others away from it.

TRUSTED
PARTNER

CONTENT

P. 1

INTRODUCTION

P. 6

INTERNATIONAL
CONSULTATION

P. 8

PREMIUM
CLIENTS

P. 10

WE ARE
TRUSTED

P. 12

OUR SECTORS

P. 14

COMMERCIAL
PROJECTS

P. 38

RESIDENTIAL
& HOSPITALITY

P. 62

INDUSTRIAL
PROJECTS

P. 72

ONGOING
PROJECTS



INTRODUCTION

Founded in 2013, KB ARCHITECTS embarked on a journey to redefine excellence in general construction and finishing. Over the years, we have meticulously designed, built, and refined a diverse range of projects, including corporate headquarters, administrative offices, industrial facilities, residential complexes, and private homes.

At KB ARCHITECTS, our commitment to quality and precision is unwavering. We take pride in delivering projects on time and exceeding expectations, ensuring that each structure we create is not just a building but a testament to ambition, innovation, and lasting success.

Our approach extends beyond engineering and construction; we strive to infuse every project with a distinct identity and a seamless fusion of functionality and aesthetics. With a collective experience spanning 60 years, our team of seasoned professionals brings a wealth of expertise, creativity, and forward-thinking solutions.

At KB ARCHITECTS, we don't just build structures—we bring visions to life and shape sustainable, future-ready spaces.



MISSION AND VISION

Mission

At KB ARCHITECTS, our mission is to transform our client's visions into reality through exceptional construction and finishing services. We are dedicated to delivering projects of the highest quality, meticulously crafted to embody the distinct identity, aspirations, and excellence that define each client's vision.

Vision

We aspire to be a leading and iconic name in the construction and fit-out industry across Egypt and the Middle East, setting new benchmarks in quality, innovation, and excellence.



Egyptian Nuclear and Radiological Regulatory Authority [ENRRA]





SCOPE OF SERVICES

CONSTRUCTION

At KB ARCHITECTS, we have the expertise and capability to manage construction, civil, and infrastructure projects from excavation to completion. By leveraging our extensive experience and highly skilled workforce, we deliver superior quality within the shortest timeframes.

Understanding that quality, cost, and time are paramount to our clients, we continuously evolve by adopting the latest construction technologies and state-of-the-art equipment. Our diverse portfolio reflects our adaptability and commitment to meeting the unique needs of each client, ensuring exceptional results across every project we undertake.

EMA PHARM - 2022

FIT - OUT

KB ARCHITECTS specializes in executing large-scale fit-out and electromechanical projects with precision and efficiency. Renowned for our expertise in delivering fast-track fit-out solutions, we seamlessly integrate customized and ready-made products, utilizing state-of-the-art techniques for exterior, landscape, and interior installations.

Additionally, we have the capability to manage fully furnished turnkey projects, ensuring a seamless and high-quality finish. Committed to continuous innovation, we stay at the forefront of the industry by adopting the latest building technologies and advanced equipment, delivering excellence in every project we undertake.

INTERNATIONAL CONSULTATION

At KB ARCHITECTS, we adhere to a rigorous Quality Management System to oversee and enhance our management processes, ensuring excellence in every aspect of our contracting services.

Recognizing that international collaboration is vital to the success of our construction projects, we prioritize knowledge sharing as a fundamental pillar of effective contractual relationships. We believe that strong collaboration fosters teamwork, enhances communication, and drives innovation, ultimately leading to superior service quality, optimized efficiency, and timely project completion.

Moreover, we embrace geographical and cultural diversity, leveraging these influences to continuously refine our methodologies and adopt cutting-edge industry practices. This dynamic approach enables us to stay ahead of evolving trends, delivering world-class solutions tailored to diverse project requirements.



THALES
CYBER AND CONSULTING

TYPHOON
CONSULTING

gyproc
SAINT-GOBAIN

PORTAFAB
Modular Building Systems

IKEA
Expansion Team - UAE

PREMIUM CLIENTS

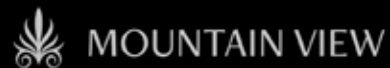




PREMIERE
HOLDING



FOUR SEASONS
Hotels and Resorts



Haier

tyco



+30

Premium
Client

280

Foremen/
Supervisors and
Workers

+90

Number
of Projects

50

Number of
Engineers

WE ARE TRUSTED

3 Contracts
2 Years



15 Contracts
7 Years

4 Contracts
3 Years



2 Contracts
2 Years

4 Contracts
3 Years



20 Contracts
6 Years

4 Contracts
3 Years




5 Contracts
2 Years

OUR SECTORS

Commercial

At KB ARCHITECTS, we specialize in the construction and fit-out of commercial developments, including office buildings, corporate headquarters, retail spaces, and warehouses.

With a highly skilled and experienced team, we have the expertise to manage and execute large-scale commercial projects, covering all aspects—from civil and structural works to electromechanical systems, architectural fit-outs, and FF&E (Furniture, Fixtures & Equipment). Our commitment to excellence ensures that every project is delivered with precision, efficiency, and the highest industry standards.



Egyptian Nuclear and Radiological Regulatory Authority [ENRRA]

Residential & Hospitality

KB ARCHITECTS specializes in the residential sector, offering expertise in both the execution of core and shell projects for developers and the creation of personalized living spaces that are both aesthetically captivating and functionally optimized for individual clients.

In addition, we are deeply involved in the selection and application of FF&E, ensuring that every detail of the interior complements the overall vision, delivering spaces that are not only beautiful but also practical and comfortable

Industrial

KB ARCHITECTS boasts a highly qualified team of construction and fit-out professionals, supported by a dedicated and experienced workforce with longstanding relationships with international vendors and ongoing training programs.

Specializing in the construction and fit-out of pharmaceutical factories and various industrial warehouses, we possess the expertise to prepare comprehensive design documents and project packages for complex industrial developments. Our extensive portfolio of successfully completed projects showcases our ability to deliver diverse and high-quality solutions across the industrial sector, demonstrating our commitment to excellence in every aspect of project execution.

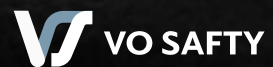


Medpack [Pharmaceutical Packaging] - 2022



Commercial

IKEA CFC - 2013





ENRRA

هيئة الرقابة النووية والإشعاع

Administrative Building

Scope Of Work

We provide a comprehensive design package that includes architecture, interior design, and full electro-mechanical drawings and calculations.

Our expertise extends to construction and fit-out services, covering the entire scope of work from design to execution. This includes the setup and management of all necessary software, ensuring a seamless process through to the handover of a fully operational turnkey project.

Throughout the project, we were supervised by Typhoon, a respected Russian consultancy, and collaborated closely with the Russian company VO Safety, ensuring the highest standards of quality and safety throughout the project lifecycle.



Nasr City, Cairo



2020



Egyptian Nuclear
& Radiological
Regulatory Authority



6 Months



Built-up Area
6,650 m²



Construction
& Fit-out













IKEA

Cairo Festival City



New Cairo, Cairo



2013



Omar Al Futtaim



6 Weeks



Built-up Area
36,500 m²



Fit-out

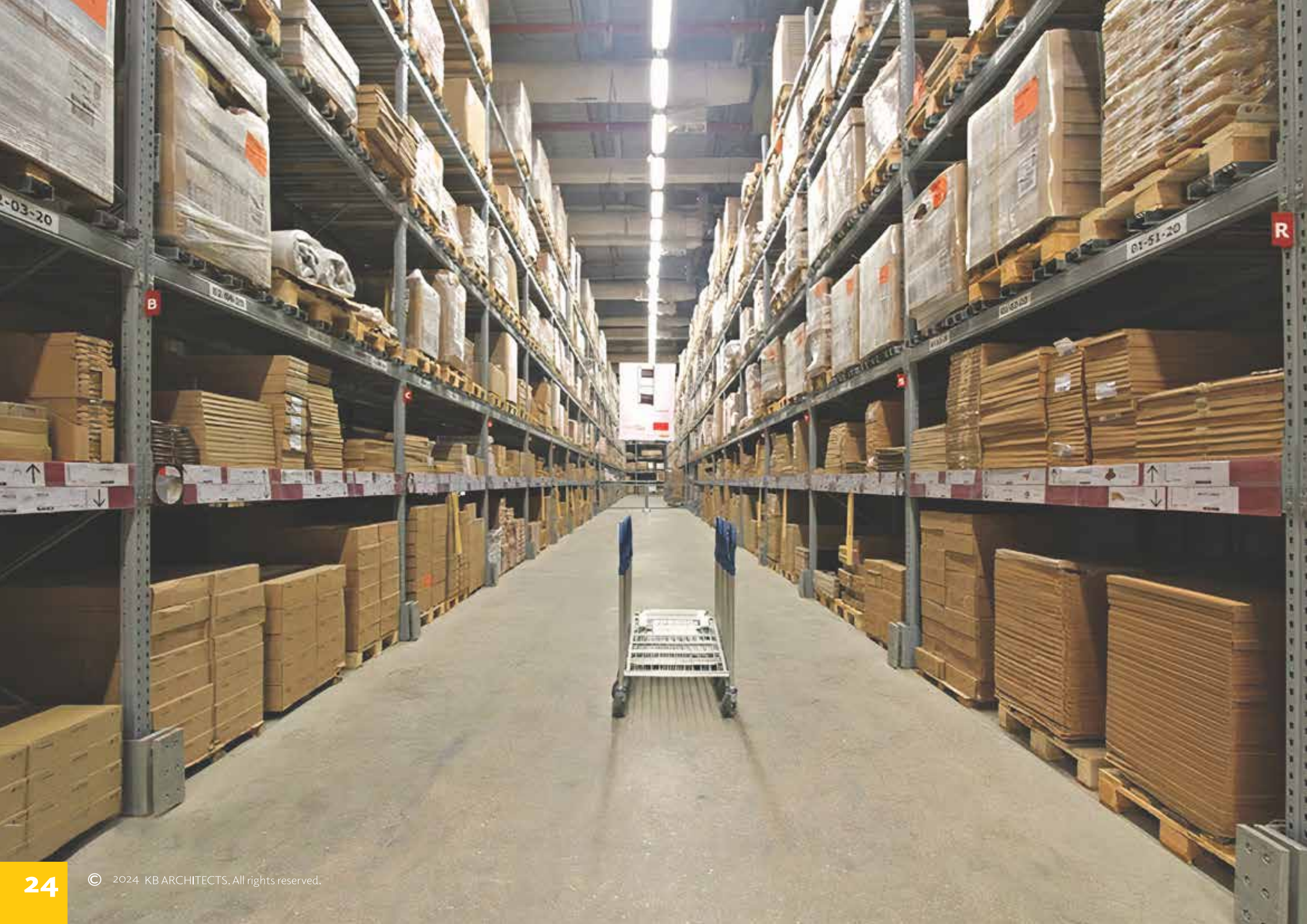


Scope Of Work

As the Main Contractor for Fit-out and Electromechanical works, we collaborated with international consultants from the IKEA expansion team, contributing to material specifications, product recommendations, shop drawing submissions, and the construction of electromechanical systems and finishing materials for the built-up stores.

From 2013 to 2019, we successfully delivered multiple annual build-ups and event structures for the annual catalog, demonstrating our ability to execute large-scale, high-quality projects on an ongoing basis. Additionally, we hold long-term contracts spanning over six years for the construction of annual catalog booth events and continue to provide maintenance services for the stores, ensuring sustained operational excellence and client satisfaction.







SAC

Monitoring Project



Nasr City, Cairo



2020



VO Safety



6 Months



Built-up Area
550 m²



Construction
& Fit-out





Scope Of Work

Our core expertise lies in providing a comprehensive design, architecture, interior design, and full electro-mechanical package, all while ensuring strict adherence to the required Russian codes and specifications. Additionally, we specialize in fit-out services, incorporating all necessary IT systems and equipment to meet the specific needs of each project, ensuring both functionality and compliance with industry standards.







MASTER TRAVEL
GROUP



Master Group Building 214

Scope Of Work

The Master Travel Headquarters is a multi-story office building comprising a basement and three floors.

KB ARCHITECTS served as both the main contractor and designer for the project, overseeing the full scope of work, including architecture, interior design, and electro-mechanical systems. We meticulously designed every detail, ensuring seamless execution and operation. The project was delivered as a turnkey solution, including the selection and implementation of FF&E, providing a fully functional and operational headquarters upon handover.



New Cairo, Cairo



2021



6 Months



Built-up Area
2,250 m²



Master Group

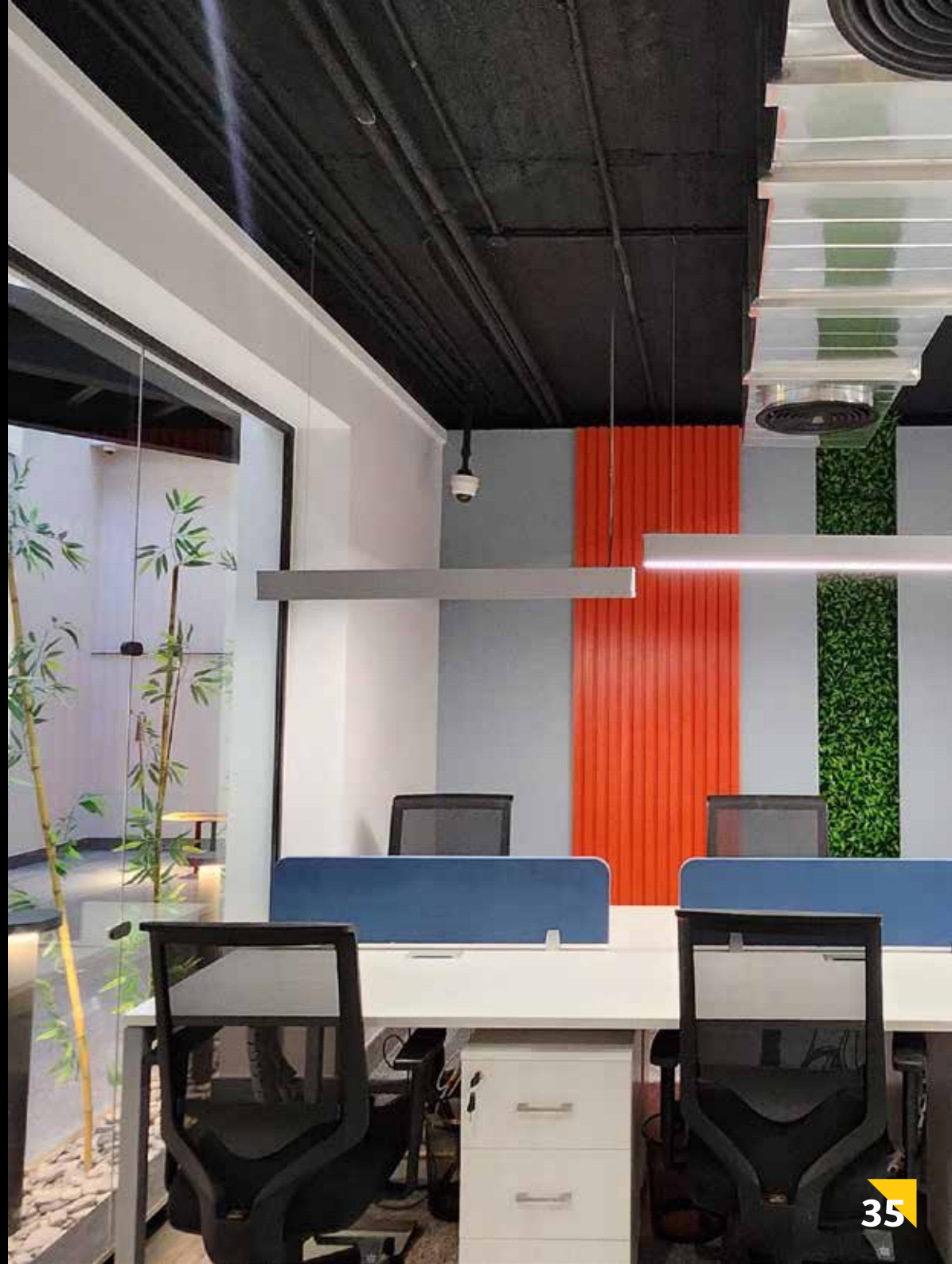


Construction
& Fit-out











American Furniture

Project: Furniture Shop
Scope: Consultation
Location: Heliopolis, Egypt



IKEA 17,18,2019

Project: Commercial Store
Scope: Light structure, Fit-out & Electromechanical
Location: New Cairo, Egypt



LONGCHAMP - CITY STARS MALL

Project: Retail Store
Scope: Fit-out
Location: Cairo, Egypt



La Fiesta

Project: Floral & Events Shop
Scope: Fit-out
Location: New Cairo, Egypt



Business Plus

Project: Office Building
Scope: Construction Civil & Skeleton
Location: New Cairo, Cairo



International Trade Office Group

Project: Office Building
Scope: Consulting & Fit-out
Location: Alexandria, Egypt



Thalass Headquarter

Project: Office Building
Scope: Fit-out
Location: Cairo, Egypt



IKEA CFC Booth

Project: Advertising Booth
Scope: Fit-out
Location: CFC - New Cairo, Egypt



GAC

Project: Office Building
Scope: Construction & Fit-Out
Location: Sheraton, Cairo



Ministry of Interior

Project: Governmental Admin. Spaces
Scope: Renovation
Location: 10th Of Ramadan, Cairo



City Club

Project: Sport Club
Scope: Construction & Fit-out
Location: El Menya, Egypt



Master Travel Head Office

Project: Office Building
Scope: Fit-out
Location: Nasr City, Egypt



Residential & Hospitality

PALM HILLS GOLF VIEWS VILLAS Photo by: Andrew Shenouda



FOUR SEASONS
Hotels and Resorts



PALM HILLS



TMG



SODIC

INERTIA



MOUNTAIN VIEW

RIXOS
HOTELS



IWAN
DEVELOPMENTS

PREMIERE
HOLDING





Golf Villas

Scope Of Work

During COP 27, KB ARCHITECTS served as the main contractor for the residential hospitality villas, delivering full architectural and electro-mechanical services for 12 luxurious villas. This project was carried out under the management and consultancy of 2G Consultants, in close coordination with the technical handover team from Rixos International Hotels, ensuring the highest standards of quality and precision throughout the process.



Sharm El Sheikh, Egypt



2022



9 Months



Built-up Area
5,000 m²



Abnaa Sinai



Finishing &
Fit-out













PALM HILLS
DEVELOPMENT

GOLF VIEWS



6th of Oct, Cairo



2016



Hamad Bin Jassim
Bin Jaber Al Thani



12 Months



Built-up Area
3,750 m²



Construction &
fit-out





PROJECT

Golf Views Compound is renowned for its elegance, offering a serene residential environment surrounded by lush green areas, a golf course, and tranquil lakes.



KB ARCHITECTS delivered this project as a turnkey solution, encompassing the complete construction and architectural finishing scope of work. The project was executed in alignment with the ECG Design House package, under the expert supervision of AAW Consulting Engineers, ensuring the highest standards of design and execution




 Project Area

Coronfel VILLA

 New Cairo, Cairo

 2022

 3 Months

 Built-up Area
450 m²

 Mohamed Ahmed

 Finishing
& Fit-out









PRIVATE VILLA

PORTO NEW CAIRO



New Cairo, Cairo



2019



13 Months



Built-up Area
882 m²



Dr. M. Abdel-Dayem



Finishing
& Fit-out

Scope Of Work

When designing a contemporary and comfortable private villa, KB ARCHITECTS brings together a team of professionals known for their creative and innovative solutions, tailored specifically to the unique needs of each project.

We managed and delivered the full scope of work, including construction, architecture, interior design, and the selection and application of FF&E , ensuring a seamless and high-quality result at every stage of the project.













Palm Hills

Project: Residential Villa
Scope: Finishing & Fit-out
Location: Cairo, Egypt



Mountain View

Project: Private Villa
Scope: Renovation
Location: North Coast, Egypt



Stone Park

Project: Private Villa
Scope: Fit-out
Location: Kattamya, Cairo



Al-Rehab

Project: Studio Unit
Scope: Fit-Out
Location: New Cairo, Cairo



Madinaty

Project: Private Villa

Scope: Fit-Out

Location: New Cairo, Cairo



Al-Rehab

Project: Private Villa

Scope: Fit-Out

Location: New Cairo, Cairo



PALM HILLS

Palm Hills VGK

Project: Private Villa

Scope: Fit-out

Location: New Cairo, Cairo



MAXIM

Project: Private Villa

Scope: Fit-out

Location: Shourok City, Cairo



SODIC

Project: Sodic East Apartment

Scope: Fit-out

Location: New Cairo, Cairo



San Stefano

Project: Residential Apartment

Scope: Fit-out

Location: Alexandria, Egypt

INDUSTRIAL





Pharmaceutical Packaging



10th Of Ramadan, Sharqia



2022



2 Years



Built-up Area
4,600 m²



Hassan M. Galal



Construction
& Fit-out





Scope Of Work

KB ARCHITECTS has extensive experience in the construction and fit-out of pharmaceutical factories, ensuring strict adherence to health and safety standards.

We successfully completed all fit-out and electro-mechanical works for MedPack Blister, a company specializing in packaging. The project was delivered on time, aligning with the client's production schedules and meeting all operational requirements for a seamless handover.









Pharmaceutical Factory

 10th Of Ramadan, Sharqia

 2022

 3 Years

 Built-up Area
8,000 m²

 Hassan M. Galal

 Construction
& Fit-out



Scope Of Work

EMA Pharm, a leading company in the pharmaceutical industry since 1995, has demonstrated remarkable growth and excellence. This project, which includes four main production lines, is one of the largest pharmaceutical factories in the region.

KB ARCHITECTS was entrusted with the responsibility of establishing and completing the entire project, beginning with coordination with the Ministry of Health and Population. Our comprehensive scope of work included civil engineering, construction, and fit-out services.

To ensure the highest standards of quality and efficiency, our team undertook specialized training sessions with renowned international companies such as Gyproc and Portafab, further enhancing the coordination and execution quality of our fit-out work.





ONGOING



PALM HILLS



redcon



redcon



Golden Gate

Office Building

Scope Of Work

At Golden Gate, our core expertise lies in fit-out. Our ongoing project involves the development of a three-story office building, two basement levels, and a ground floor. We are proud to collaborate with Redcon Properties, a leading construction contractor in Egypt.



New Cairo, Cairo



2025



6 Months



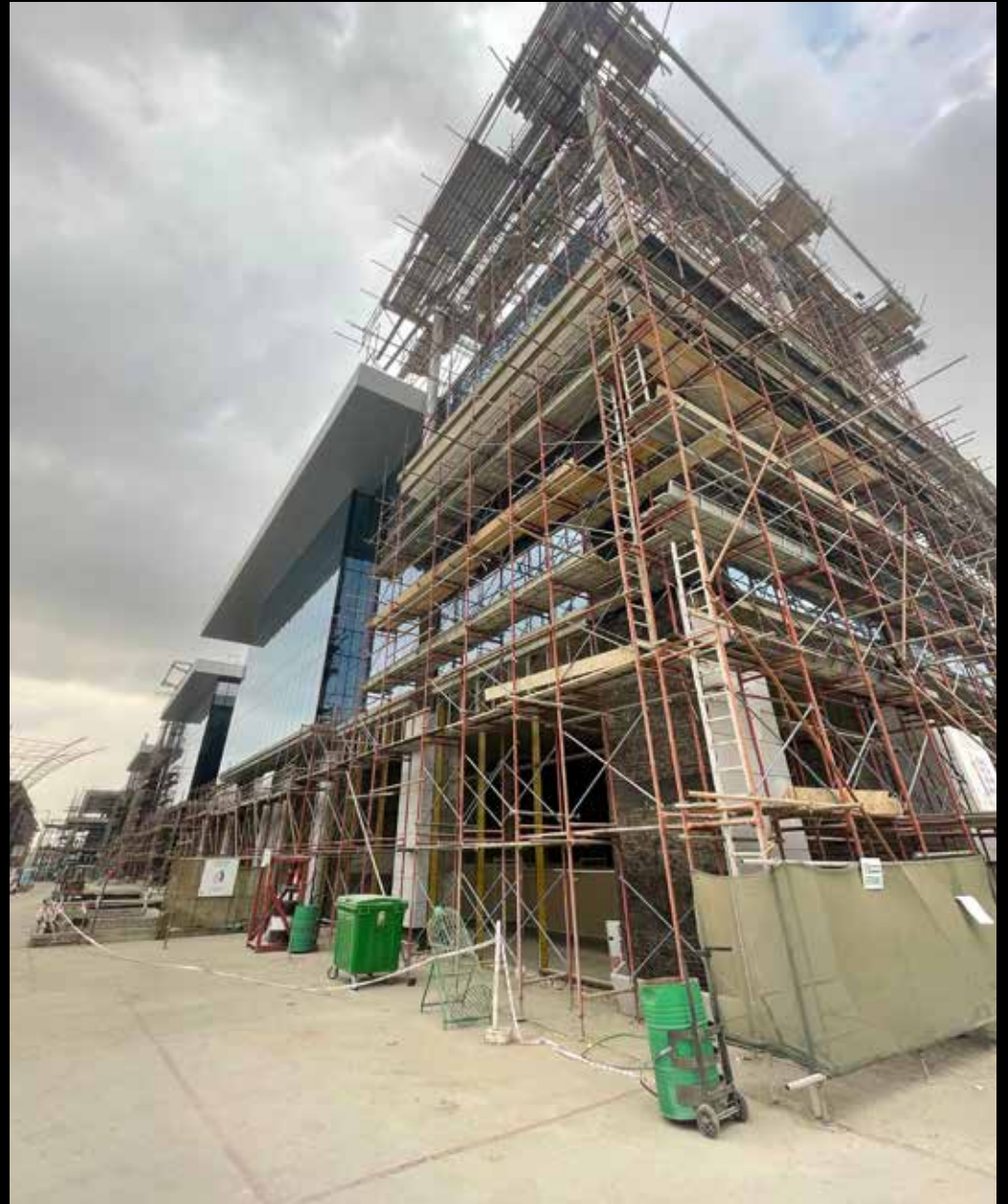
Built-up Area
5,910 m²



REDCON



Finishing &
Fit-out









CSCEC

EL-Alamein Towers



Scope Of Work

Our primary focus encompasses Landscape and Infrastructure, along with Fit-Out, while ensuring full compliance with all relevant Chinese codes and standards.



EL-Alamein, North Coast



2025



18 Months



Built-up Area
4,000 m²



CSCEC



FIT OUT
LANDSCAPING
INFRASTRUCTURE



IKEA

Cairo Festival City «Renovation»



New Cairo, Cairo



2025



2 Months



Built-up Area
2,100 m²



Renovation



Omar Al Futtaim

Scope Of Work

As the Main Contractor, we executed the fit-out and electromechanical works for the IKEA expansion project, collaborating closely with their international team of consultants. This project encompassed a comprehensive renovation strategy, during which we successfully delivered Phases 1 and 2 and are now progressing seamlessly through Phase 3.









PALM HILLS



Golf Views Extension



6th of Oct, Cairo



2024



8 Months



Built-up Area
5,000 m²



Palm Hills



Construction

Scope Of Work

Building on our successful collaboration with Palm Hills on the Golf Views development since 2016, we are delighted to re-engage with them for the core and shell construction of five villas as part of their Extension project.





GAC

Headquarter



10th of Ramadan,
Sharqia



2024



GAC



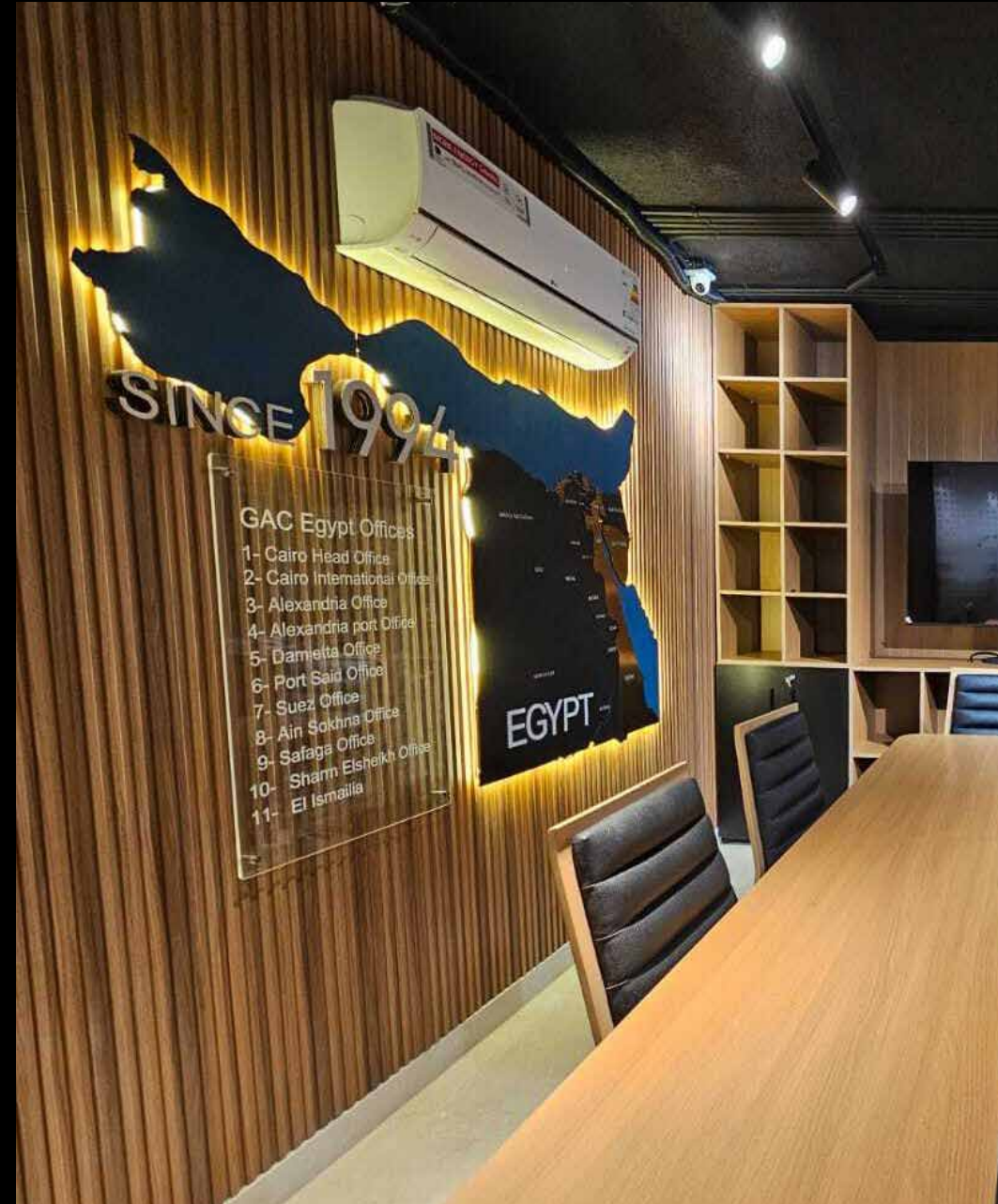
6 Months

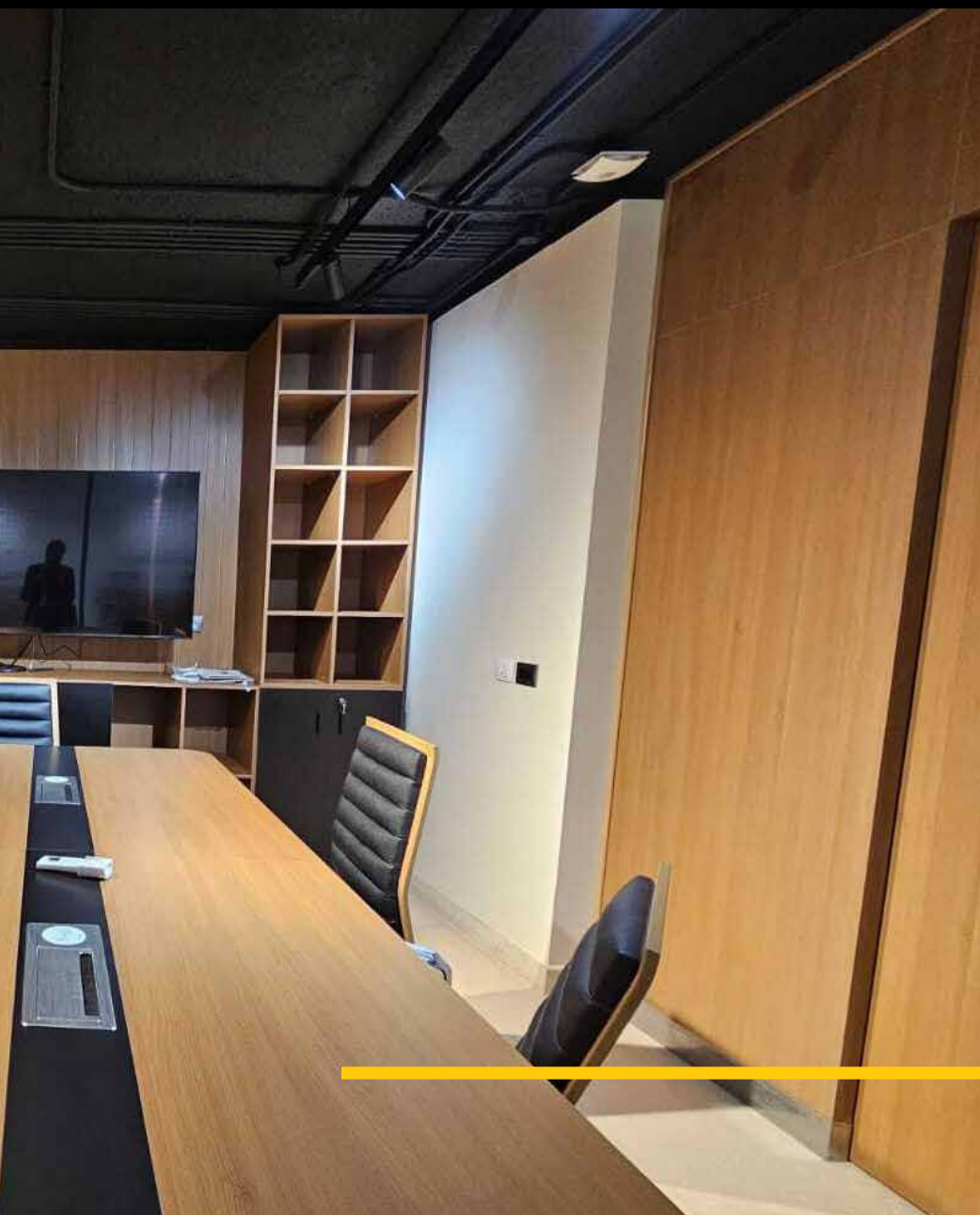


Built-up Area
500 m²



Fit-out





Scope Of Work

Our main scope is design, architecture, interior and full electro-mechanical package respecting and applying all required Russian side codes and specifications in addition to the fit-out and all required IT applying system and equipment.





CONTACT US



27 Darna Buildings, Maadi, Cairo, Egypt



[+2] 01014126660 | [+2] 01003530353 | [+2] 0227471349



www.kbarchitects.org | e-mail: info@kbarchitects.org



KB'



KB